



RM/CD Series

CARTRIDGE FILTER HOUSING
INTERNALLY COATED

RM: SPLIT BODY DESIGN

CD: CAGE DESIGN

PRINCIPALI APPLICAZIONI:

- DISSALAZIONE
- TRATTAMENTO ACQUE
- CHIMICAFINE
- PETROLCHIMICA
- OIL & GAS
- ENERGIA
- SIDERURGICA

CHARACTERISTICS:

- Construction materials:
Carbon steel
- Removable internals materials:
Polypropylene
PVC
Duplex stainless steel or Super Duplex.
- Internal coating materials:
Neoprene
Ebonite
Glass Flake Epoxy
Abcite
Halar
PFA
(other materials available as option).
- Conform to codes:
ASME Sez. VIII Div. 1
EN 13445
(other calculation codes available as option).
- Suitable for Gr. 1 and 2 liquids filtration.
- Conform to 2014/68/UE PED Directive.
- Conform to 2014/34/UE ATEX Directive.
- Available with U-Stamp certification.
- RM: "split-body design" with tubesheet in between
Intermediate flanges.
- CD: "cage design" with tubesheet dismountable and removable.
- In/out connections up to 36" (DN 900).
- Flow-rate up to 3200 m³/h.
- Suitable for OD 63 or 68 mm filtering cartridges.
- Suitable for filtering cartridges cod. 8 or cod. 9L.

ASCO

FILTRI

a mott company

RM/CD Series

CARTRIDGE FILTER HOUSING

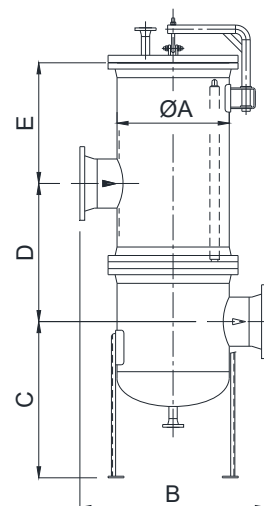
INTERNALLY COATED

RM: SPLIT BODY DESIGN

CD: CAGE DESIGN

63RMT / 68RMT series dimensions:

Model	Dimensions [mm]						Flow-rate [m³/h]	Cartridges
	ØA	B	C	D	E	In/out		
63RMT054	219.1	520	670	650	830	3"	20	5 x 40"
63RMT074	273.0	600	750	650	850	3"	28	7 x 40"
63RMT124	323.8	620	950	580	810	4"	48	12 x 40"
63RMT134	355.6	650	800	750	810	4"	52	13 x 40"
63RMT204	406.4	720	825	750	810	6"	80	20 x 40"
63RMT244	457.2	770	850	810	810	6"	96	24 x 40"
63RMT314	508.0	900	900	820	810	8"	124	31 x 40"
63RMT384	558.8	950	925	820	810	8"	152	38 x 40"
63RMT464	609.6	1060	1000	860	770	10"	184	46 x 40"
63RMT564	660.4	1100	1050	800	770	12"	224	56 x 40"
63RMT664	711.2	1150	1050	730	740	12"	264	66 x 40"
63RMT814	762.0	1300	1130	880	740	14"	324	81 x 40"
63RMT874	812.8	1350	1130	950	700	14"	348	87 x 40"
63RMT1004	863.6	1440	1150	960	700	16"	400	100 x 40"
63RMT1164	914.4	1500	1150	970	700	16"	464	116 x 40"
63RMT1404	965.2	1560	1200	1020	700	18"	560	140 x 40"
63RMT1414	1016.0	1610	1250	1080	650	18"	564	141 x 40"
63RMT1534	1066.8	1680	1300	1120	650	20"	612	153 x 40"
63RMT1734	1117.6	1720	1300	1130	650	20"	692	173 x 40"
63RMT1974	1168.4	1770	1300	1140	650	20"	788	197 x 40"
63RMT2254	1219.2	2000	1300	1250	610	24"	900	225 x 40"
63RMT2454	1270	2000	1300	1250	610	24"	980	245 x 40"



TECHNICAL DATA

CONSTRUCTION MATERIALS

BODY:

- Carbon steel

REMOVABLE INTERNALS:

- Polypropylene

- PVC

- 316-SS

- Duplex SS or Super Duplex

- Monel

- Other materials available

GASKETS

- Reinforced EPDM

- EPDM with steel core

IN/OUT

- Up to 36"

FLOW-RATE

- Up to 3500 m³/h

ACCESSORIES

- DIFFERENTIAL PRESSURE GAUGE

- DIFFERENTIAL PRESSURE SWITCH

- VENT VALVE

- DRAIN VALVE

Model	Dimensions [mm]					In/out		Flow-rate AFP [m³/h]		Cartridges
	ØA	B	C	D	E	Cod. 8	Cod. 9L	Cod.8	Cod. 9L	
68RMT044	219.1	520	670	650	830	3"	3"	24	32	4 x 40"
68RMT074	273.0	600	750	650	850	3"	4"	42	56	7 x 40"
68RMT104	323.8	620	950	580	810	4"	6"	60	80	10 x 40"
68RMT124	355.6	650	800	750	810	6"	6"	72	96	12 x 40"
68RMT164	406.4	720	825	750	810	6"	6"	96	128	16 x 40"
68RMT224	457.2	770	850	810	810	6"	8"	132	176	22 x 40"
68RMT264	508.0	900	900	820	810	8"	8"	156	208	26 x 40"
68RMT334	558.8	950	925	820	810	8"	8"	198	264	33 x 40"
68RMT374	609.6	1060	1000	860	770	8"	10"	222	296	37 x 40"
68RMT524	660.4	1100	1050	800	770	10"	10"	312	416	52 x 40"
68RMT604	711.2	1150	1050	730	740	10"	12"	360	480	60 x 40"
68RMT664	762.0	1300	1130	880	740	10"	12"	396	528	66 x 40"
68RMT814	812.8	1350	1130	950	700	12"	14"	486	648	81 x 40"
68RMT914	863.6	1440	1150	960	700	12"	14"	546	728	91 x 40"
68RMT1004	914.4	1500	1150	970	700	14"	16"	600	800	100 x 40"
68RMT1144	965.2	1560	1200	1020	700	16"	18"	684	912	114 x 40"
68RMT1304	1016.0	1610	1250	1080	650	18"	20"	780	1040	130 x 40"
68RMT1434	1066.8	1680	1300	1120	650	20"	20"	858	1144	143 x 40"
68RMT1554	1117.6	1720	1300	1130	650	20"	20"	930	1240	155 x 40"
68RMT1864	1168.4	1770	1300	1140	650	20"	20"	1116	1488	186 x 40"
68RMT1974	1219.2	2000	1300	1250	610	24"	24"	1182	1576	197 x 40"
68RMT2064	1270	2000	1300	1250	610	24"	24"	1236	1648	206 x 40"

Suggested flow-rate with clean water. Initial Delta-P < 0.1 bar with cartridges:

- 5 µm MBH series

- 10 µm AFP series, cod. 8 and cod. 9L

Flow-rates may change according to the installed filtration rating.

Flow-rates on table are referred to clean water; reduce the flow-rate according to the application.

Dimensions valid for rating 150# max.

For higher rating, 50" and 60" cartridges or different dimensions, contact ASCO Filtri.

ASCO Filtri S.p.A.

Viale delle Scienze, 8
20082 Binasco (MI) - Italy

Phone: +39 02 89703.1

Fax: +39 02 89703.410

E-mail: info@ascofiltri.com

Web: www.ascofiltri.com

ASCO
FILTRI
a mott company

63CDT series features:

CD series filters have been designed for those applications where filter elements fast replacement times are required.

This filters series is made with the so-called "cage design": in practice, once the filter is opened, instead of replacing the cartridges individually inside the filter, the so-called "cage" is completely extracted and consisting of:

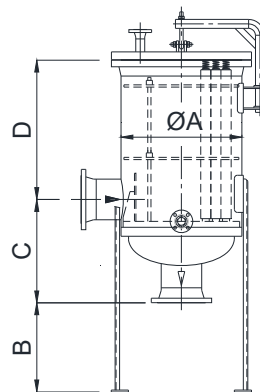
- tubesheet
- centring grids
- tie rods
- filter elements

all without the aid of wrenches or special tools as the entire filter bundle is kept in position without the use of dedicated tie rods but directly from the filter cover. By keeping a pre-assembled cage available, you can replace the exhausted one in extremely short times (only the time necessary to open and close the top cover) and replace the filter elements at a later time, outside the filter housing.

63CDT series dimensions:

Model	Dimensions [mm]					Flow-rate [m ³ /h]	Cartridges Qty x H
	ØA	B	C	D	In/out		
63CDT194	457.2	550	500	970	6"	76	19x 40"
63CDT354	609.6	550	550	970	6"	140	35 x 40"
63CDT524	711.2	600	620	940	8"	208	52 x 40"
63CDT664	812.8	700	650	910	10"	264	66 x 40"
63CDT1144	1016.0	800	780	900	12"	456	114 x 40"

*Suggested flow-rate with clean water. Initial Delta-P < 0.1 bar with 5 µm MBH series cartridges.
Flow-rates may change according to the installed filtration rating.
Flow-rates on table are referred to clean water; reduce the flow-rate according to the application.
Dimensions valid for rating 150# max.
For higher rating, 50" and 60" cartridges or different dimensions, contact ASCO Filtri.*



Cage design sea water filter suitable for 2000 m³/h flow-rate equipped with no. 400 x L 50" cartridges.



Cage design brackish water filter suitable for 400 m³/h flow-rate equipped with no. 80 x L 50" cartridges.

RM/CD Series

CARTRIDGE FILTER HOUSING
INTERNALLY COATED

RM: SPLIT BODY DESIGN

CD: CAGE DESIGN

Contact us for any further information.



Filtri per acqua di mare in fase di installazione, ciascuno idoneo per portata di 1150 m³/h con installate nr. 230 cartucce da 50".



Filtro per acqua di mare in fase costruzione, idoneo per portata di 350 m³/h con installate nr. 88 cartucce da 40".

We reserve the right to change the data of this specification without notice.

ASCO Filtri S.p.A.

Viale delle Scienze, 8
20082 Binasco (MI) - Italy
Phone: +39 02 89703.1

Fax: +39 02 89703.410

E-mail: info@ascofiltri.com

Web: www.ascofiltri.com

ASCO
FILTRI
a **mott** company